



**Kirk Scott**  
**Design Engineer**

**Horton, Inc.**  
**1170 15<sup>th</sup> Avenue SE**  
**Minneapolis, MN 55414**  
**Direct: 612-627-5741**  
**Fax: 612-378-6439**  
**Email: kscott@hortoninc.com**

## **FAX TRANSMITTAL**

**Subject** Horton Drivemaster 989012/999012

**COMMENTS:**

Aaron,

In August of last year, per Peterbilt's request, Horton changed the journal bracket on the 999012. This was done so that during engine dress Horton and Borg-Warner fan drives would share the same engine mounting stud locations. The fan center did not change when the new journal bracket was implemented only the mounting location.

What mechanics are encountering during service is that the replacement fan drive has the new bracket, which uses different mounting holes on the engine.

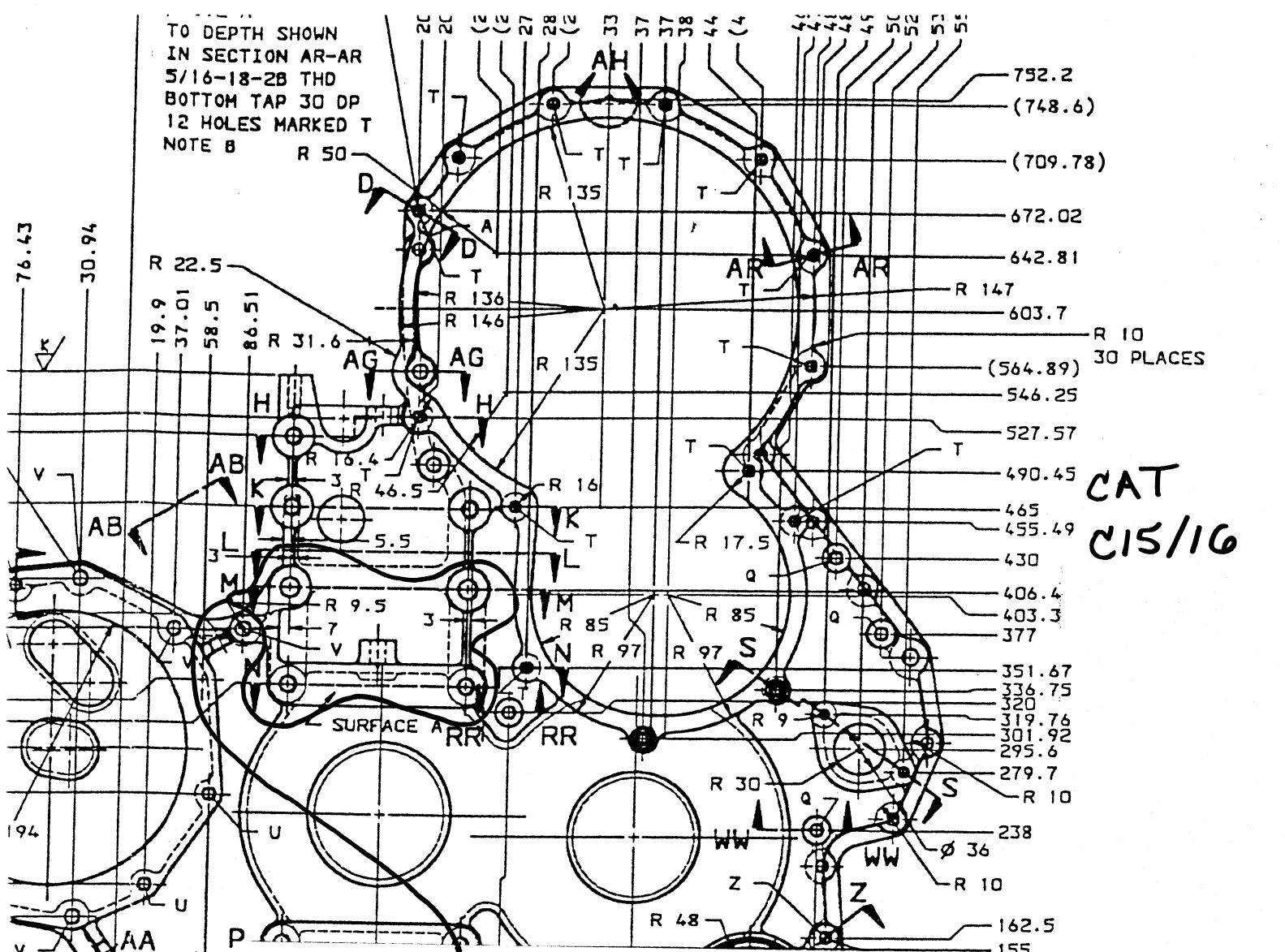
DriveMaster 999012's built before Serial # 2790699 use the old bracket; therefore, replacement with current production 999012's requires relocating the engine-mounting studs. (See accompanying drawings for clarification)

Because this engineering change was driven by Peterbilt, this issue should be brought up through the appropriate Peterbilt channels.

Respectfully,

**CONFIDENTIAL FAX**

TO DEPTH SHOWN  
 IN SECTION AR-AR  
 5/16-18-2B THD  
 BOTTOM TAP 30 DP  
 12 HOLES MARKED T  
 NOTE B



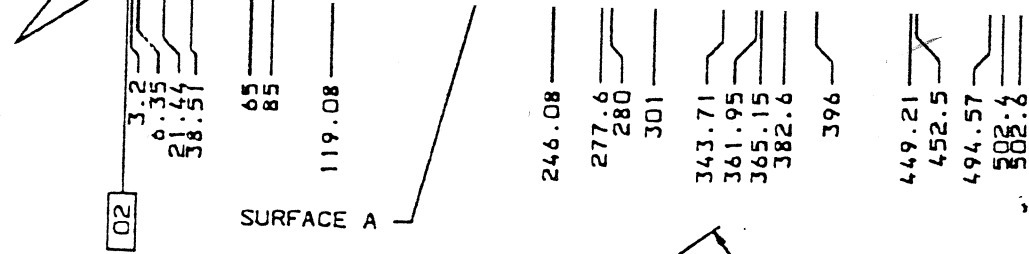
OLD MOUNTING  
 LOCATION  
 FOR HORTON 999012

Ø 8.2-A 22 DP  
 3/8-16-2B THD TAP  
 TO DEPTH SHOWN  
 2 HOLES MARKED Z

⊕	⊕	⊕	⊕	⊕	⊕	⊕	⊕
⊕	⊕	⊕	⊕	⊕	⊕	⊕	⊕

Ø 8.2-A 24 DP  
 3/8-16-2B THD  
 BOTTOM TAP 20 DP  
 2 HOLES MARKED W

⊕	⊕	⊕	⊕	⊕	⊕	⊕	⊕
⊕	⊕	⊕	⊕	⊕	⊕	⊕	⊕



NOTE A: 50 HOLES

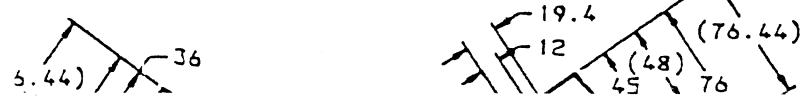
⊕	⊕	⊕	⊕	⊕	⊕	⊕	⊕
⊕	⊕	⊕	⊕	⊕	⊕	⊕	⊕

NOTE B: 14 HOLES

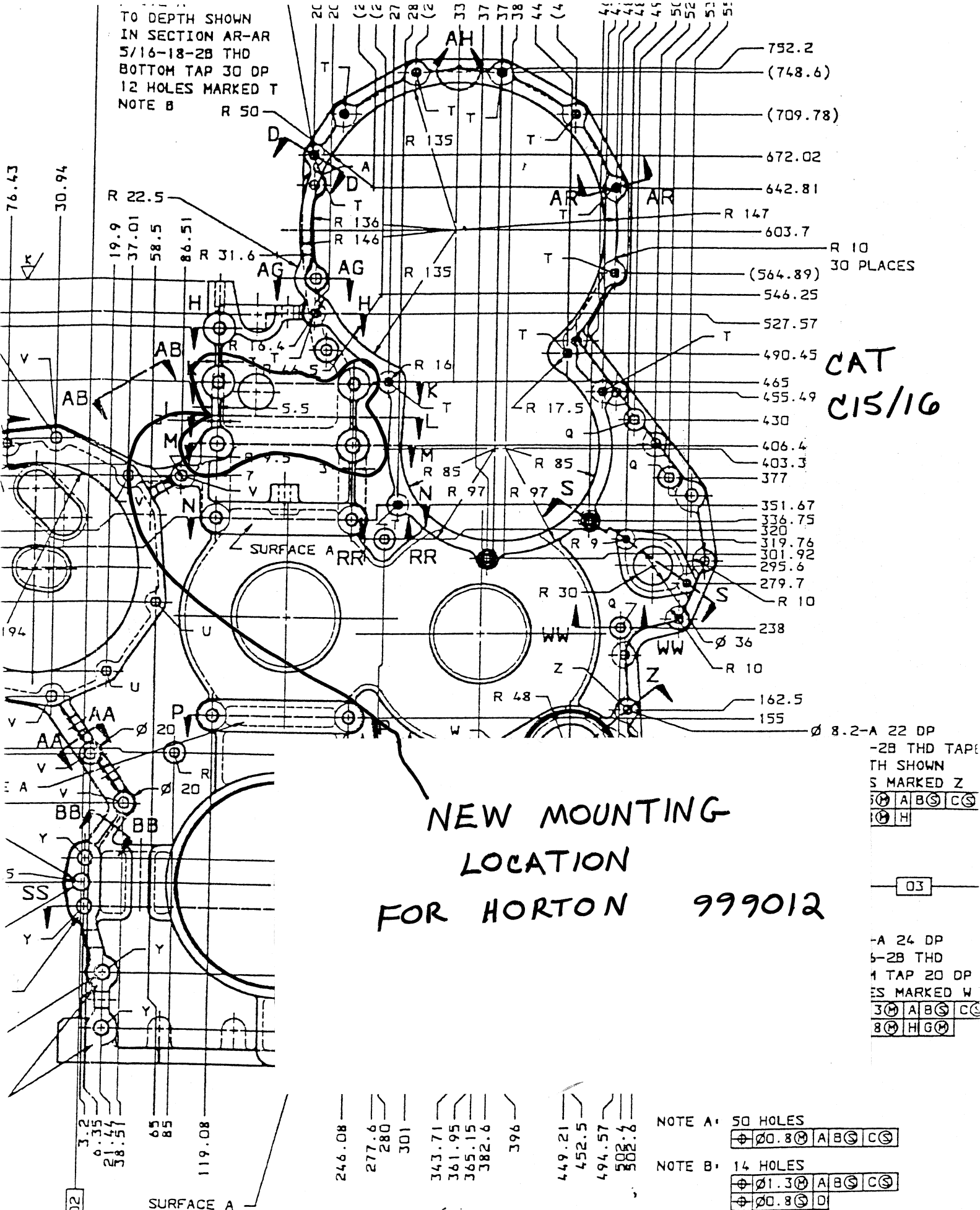
⊕	⊕	⊕	⊕	⊕	⊕	⊕	⊕
⊕	⊕	⊕	⊕	⊕	⊕	⊕	⊕

NOTE C: 1° DRAFT REQUIRED IN AREA C

NOTE D: PERMANENT MOLD CASTING



TO DEPTH SHOWN  
IN SECTION AR-AR  
5/16-18-2B THD  
BOTTOM TAP 30 DP  
12 HOLES MARKED T  
NOTE B



CAT  
C15/16

NEW MOUNTING  
LOCATION  
FOR HORTON 999012

Ø 8.2-A	22 DP
-2B THD	TAPE
TH SHOWN	
S MARKED Z	
Ø 1.3	A B C C
Ø 0.8	H

03
----

-A	24 DP
5-2B	THD
1	TAP 20 DP
ES	MARKED W
Ø 1.3	A B C C
Ø 0.8	H G

NOTE A: 50 HOLES  

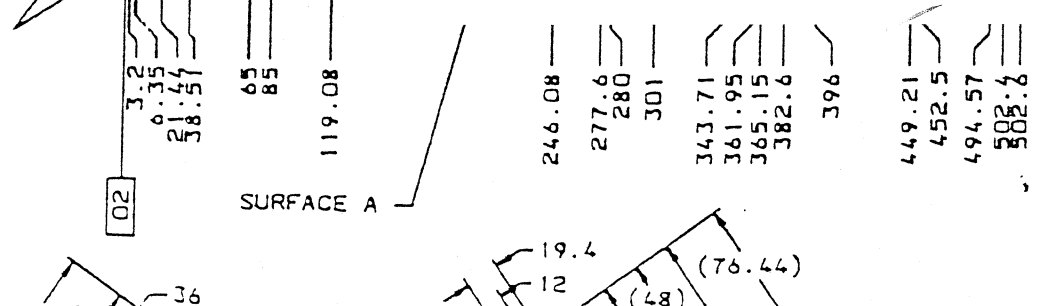
Ø 0.8	A B C C
-------	---------

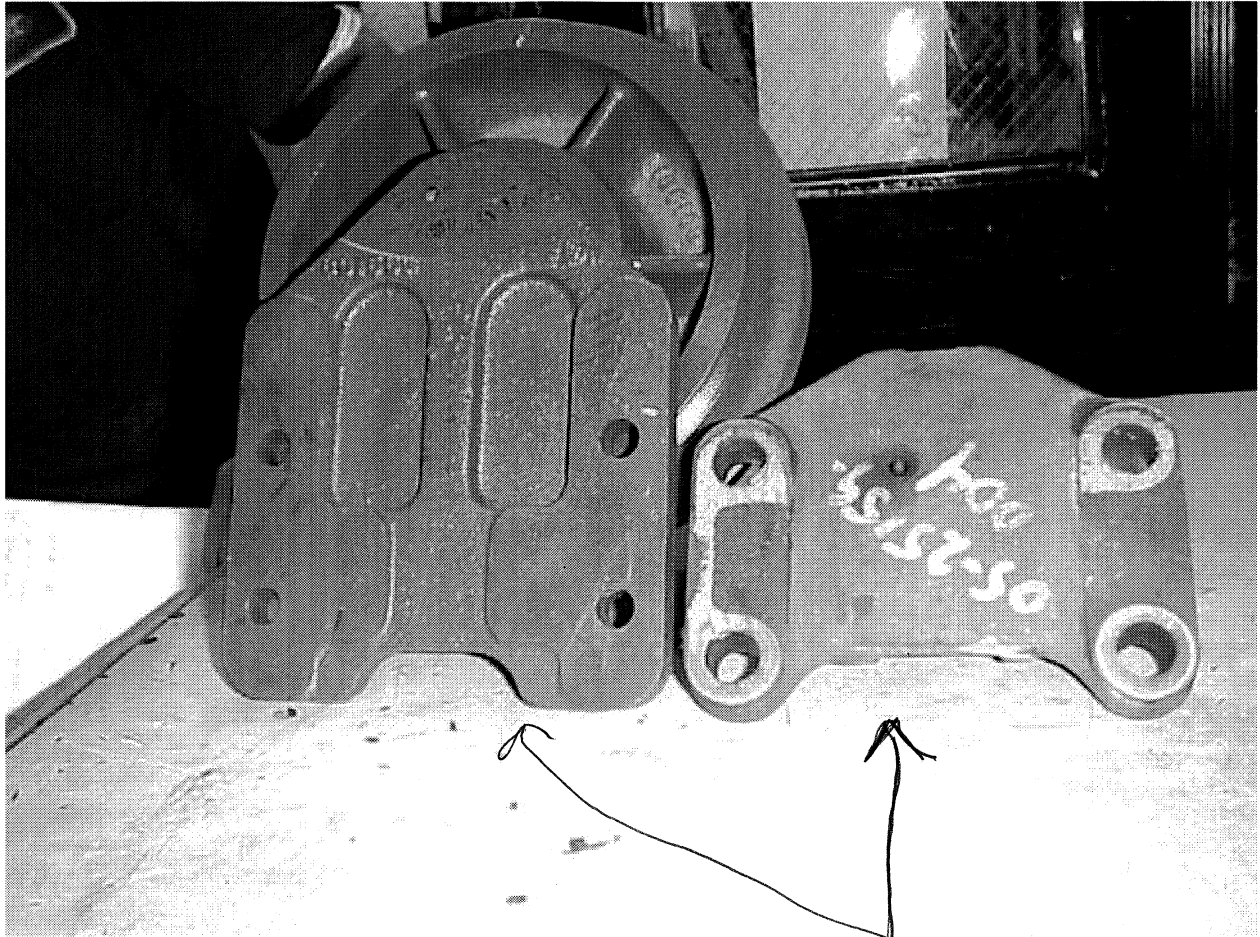
NOTE B: 14 HOLES  

Ø 1.3	A B C C
Ø 0.8	D

NOTE C: 1° DRAFT REQUIRED IN AREA C

NOTE D: PERMANENT MOLD CASTING





AUG 00 changed brkt. FROM TO.

NOW 14998

WAS 14766

- NEW OBS.

ECN 16989

CHAD. L.

989046