

Description:

This procedure will walk you through the simple steps for replacing the Outside Air Temp. (OAT) Sensor in your mirror. Your mirror may be slightly different from the ones in the pictures, but the steps will be the same.

Mirror styles this procedure applies to are:

West Coast and Moto Mirror or Road Scan

Tools/parts needed: 3/16 drill bit

Electric/cordless drill

Pliers

Rivet gun (needs to fit 1/8 rivet shank)

Parts Kit SK-1525

Step 1:

Disconnect all power to the mirror.

Step 2:

Remove the mirror from the mounting brackets as you would normally do.

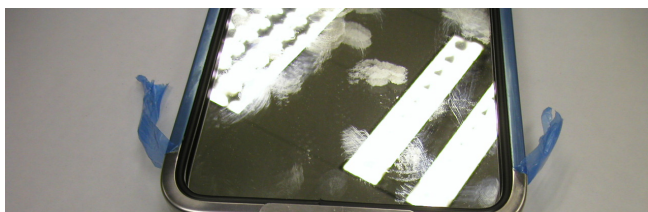
Step 3:

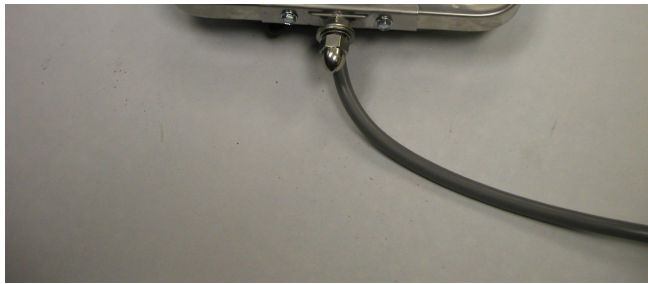
Place the mirror on a table where there will be ample room to work. If needed remove mirror and harness from truck. NEVER try performing this procedure on a platform or Ladder.

Step 4:

West Coast Mirror

Remove 1 screw from the top, and one screw from the bottom. The side brackets will come off and the mirror parts can be disassembled.





Bottom View of Mirror

Moto Mirror or Road Scan

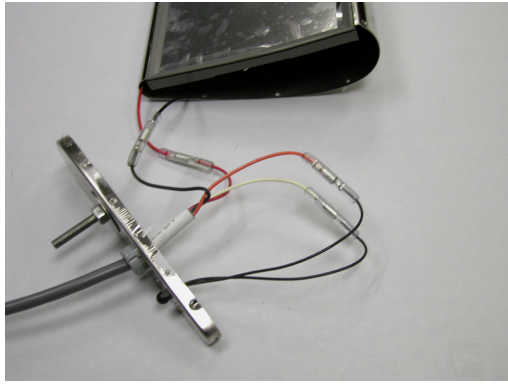
Drill (3/16 drill bit) off the heads of all the rivets along the bottom perimeter of the mirror holding the bottom plate on. This will allow the bottom plate with the OAT sensor to be removed. You may have to take a punch and gently push the rivet bodies inside the mirror so the plate will come loose. Remember to remove all the rivets from inside the mirror.



Step 5:

Unhook the OAT Sensor from the wire harness.





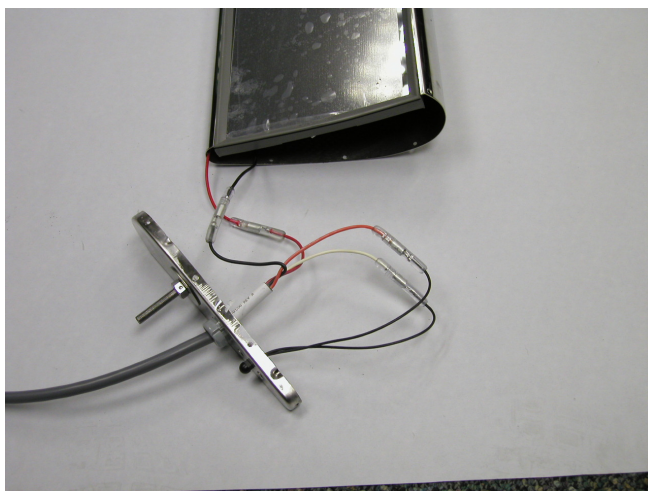
Step 6:

Drill out the 2 rivets holding the OAT Sensor to the plate.

West Coast Mirror



Moto Mirror or Road Scan



Step 7:

Put replacement sensor into position and use replacement rivet supplied to reinstall sensor.

Step 8:

Reconnect sensor to harness.

Step 9:

Reassemble mirror using the rivets supplied, or on the West Coast reinstall the screws until tight.

Step 10:

Reinstall mirror on truck.

Step 11:

Reconnect power to mirror.

Note:

In the parts service kit there will be different length rivets. You may not need them all. One kit was created to service many different mirrors.

The 2 longer rivets are for the Sensor. The short ones are for the perimeter of the bottom plate.